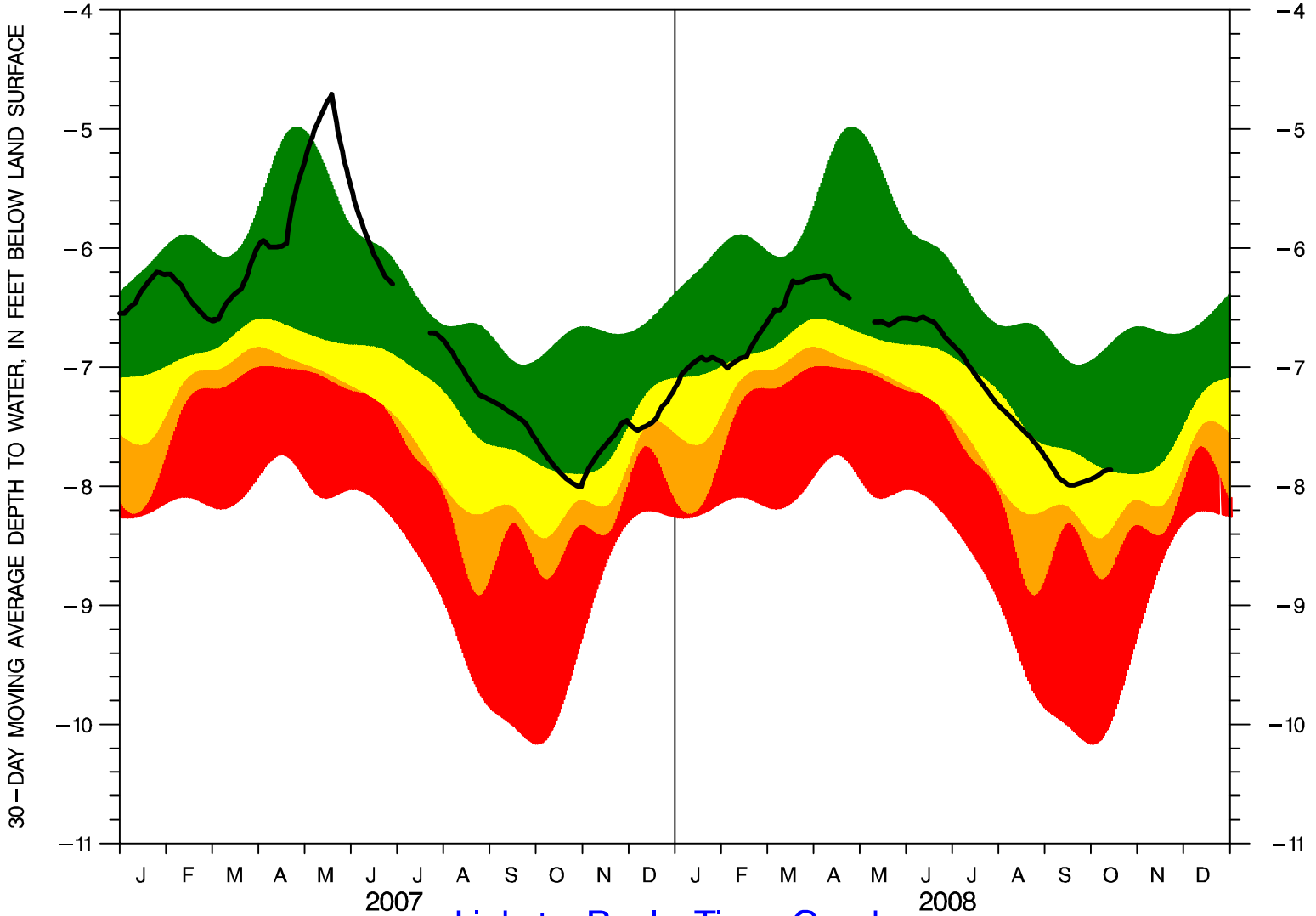


DELAWARE COUNTY OBS WELL DE-723

US GEOLOGICAL SURVEY PROVISIONAL DATA - SUBJECT TO CHANGE
30-DAY MOVING AVERAGE DAILY DEPTH TO WATER
BEGIN YEAR=1983 NUMBER OF YEARS=23.6 DATE OF PLOT=10/11/08



ALL DATA SHOWN ARE BASED ON 30-DAY MOVING AVERAGES; PERCENTILE BANDS HAVE BEEN SMOOTHED.

SOLID LINE = 30-DAY MOVING AVERAGE OF CURRENT DAILY DEPTH TO WATER

GREEN (TOP) BAND = 25- TO 75-PERCENTILE DEPTHS (NORMAL CONDITIONS)

YELLOW BAND = 10- TO 25-PERCENTILE DEPTHS (DROUGHT WATCH CONDITIONS)

ORANGE BAND = 5- TO 10-PERCENTILE DEPTHS (DROUGHT WARNING CONDITIONS)

RED (BOTTOM) BAND = 0- TO 5-PERCENTILE DEPTHS (DROUGHT EMERGENCY CONDITIONS)