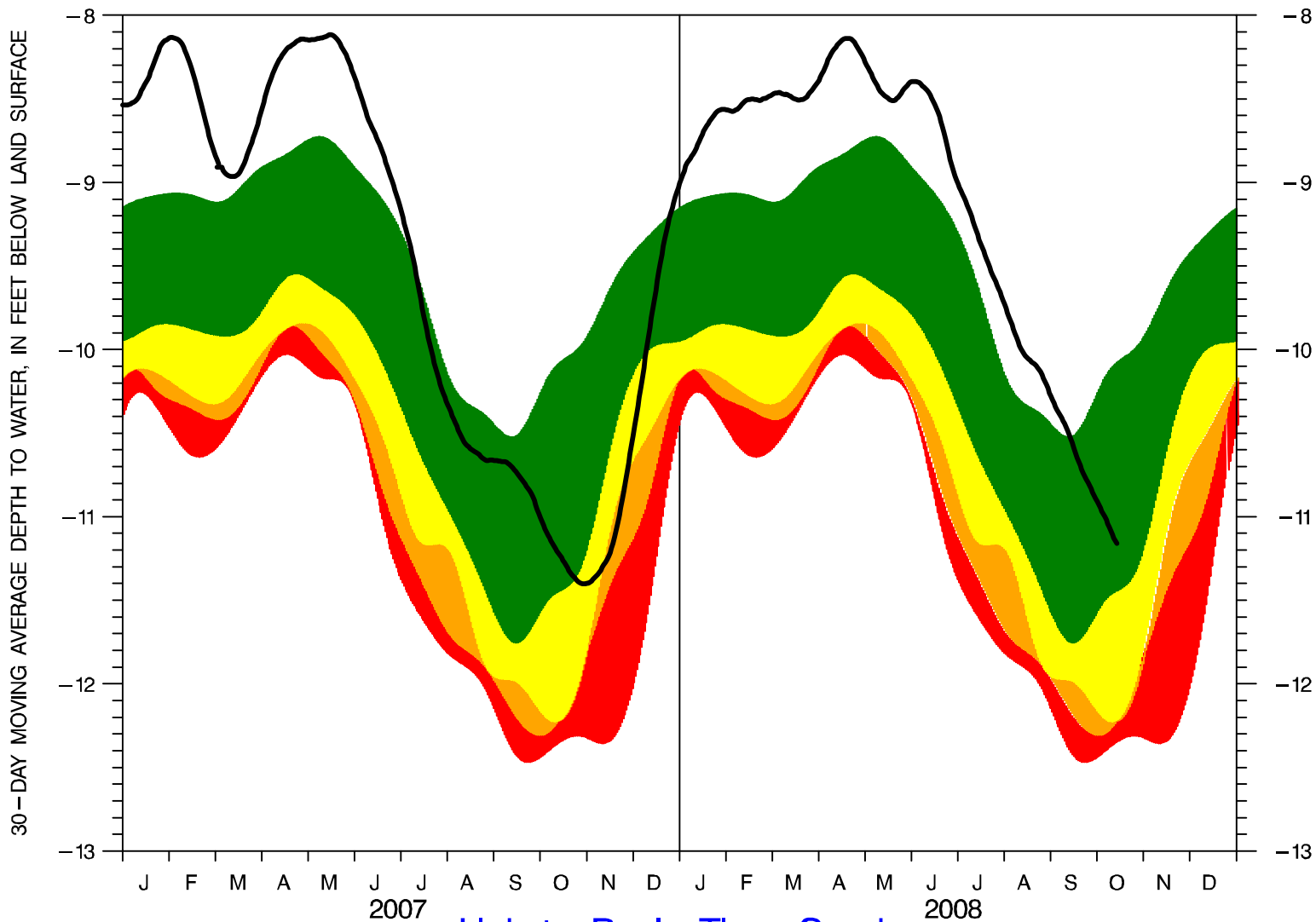


# FOREST COUNTY OBS WELL FO-11

US GEOLOGICAL SURVEY PROVISIONAL DATA – SUBJECT TO CHANGE

30-DAY MOVING AVERAGE DAILY DEPTH TO WATER

BEGIN YEAR=1973 NUMBER OF YEARS=29.2 DATE OF PLOT=10/11/08



ALL DATA SHOWN ARE BASED ON 30-DAY MOVING AVERAGES; PERCENTILE BANDS HAVE BEEN SMOOTHED.

SOLID LINE = 30-DAY MOVING AVERAGE OF CURRENT DAILY DEPTH TO WATER

GREEN (TOP) BAND = 25- TO 75-PERCENTILE DEPTHS (NORMAL CONDITIONS)

YELLOW BAND = 10- TO 25-PERCENTILE DEPTHS (DROUGHT WATCH CONDITIONS)

ORANGE BAND = 5- TO 10-PERCENTILE DEPTHS (DROUGHT WARNING CONDITIONS)

RED (BOTTOM) BAND = 0- TO 5-PERCENTILE DEPTHS (DROUGHT EMERGENCY CONDITIONS)