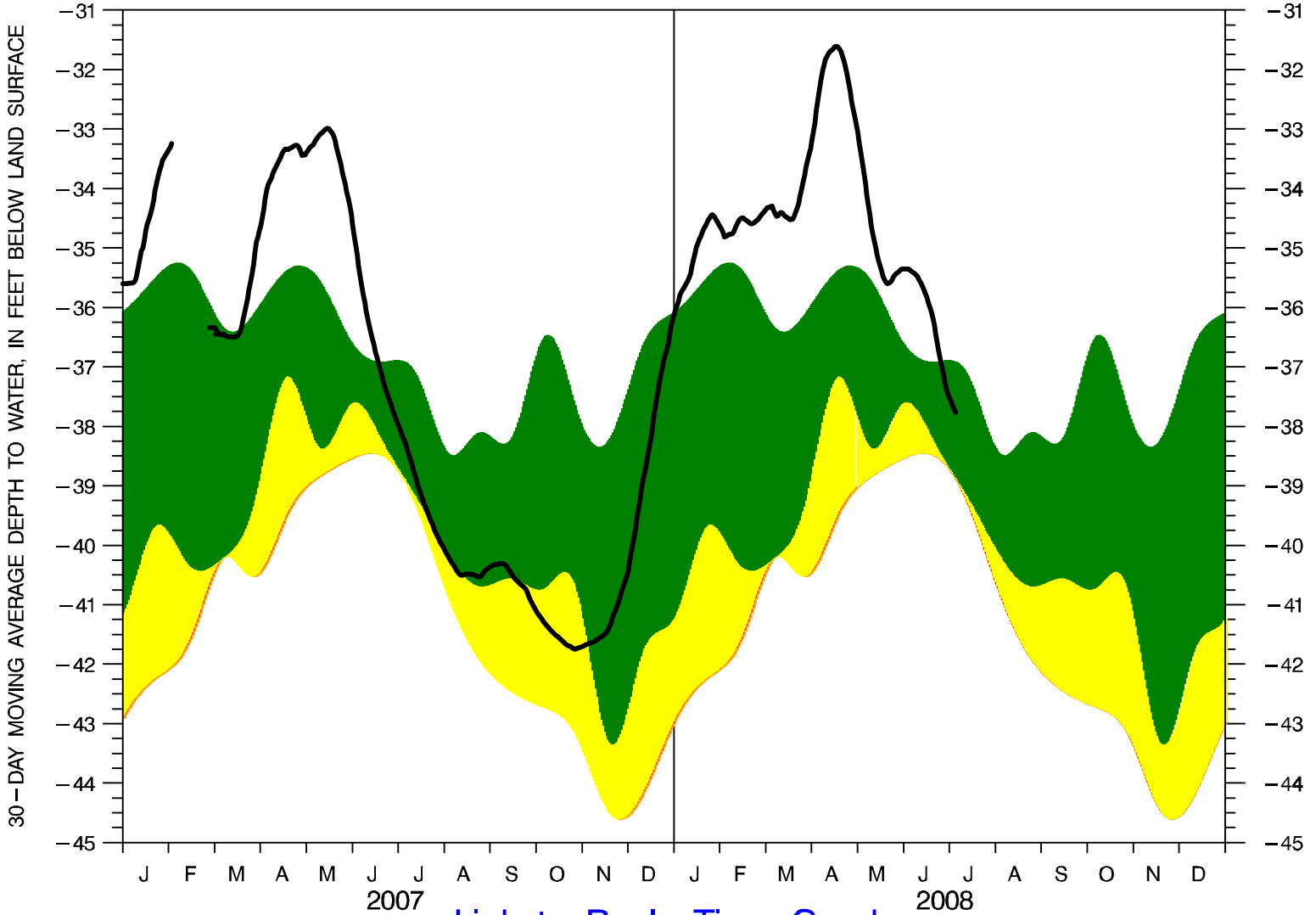


# JEFFERSON COUNTY OBS WELL JE-425

US GEOLOGICAL SURVEY PROVISIONAL DATA - SUBJECT TO CHANGE  
30-DAY MOVING AVERAGE DAILY DEPTH TO WATER  
BEGIN YEAR=2001 NUMBER OF YEARS=6.6 DATE OF PLOT=07/05/08



ALL DATA SHOWN ARE BASED ON 30-DAY MOVING AVERAGES; PERCENTILE BANDS HAVE BEEN SMOOTHED.

SOLID LINE = 30-DAY MOVING AVERAGE OF CURRENT DAILY DEPTH TO WATER

- GREEN (TOP) BAND = 25- TO 75-PERCENTILE DEPTHS (NORMAL CONDITIONS)
- YELLOW BAND = 10- TO 25-PERCENTILE DEPTHS (DROUGHT WATCH CONDITIONS)
- ORANGE BAND = 5- TO 10-PERCENTILE DEPTHS (DROUGHT WARNING CONDITIONS)
- RED (BOTTOM) BAND = 0- TO 5-PERCENTILE DEPTHS (DROUGHT EMERGENCY CONDITIONS)