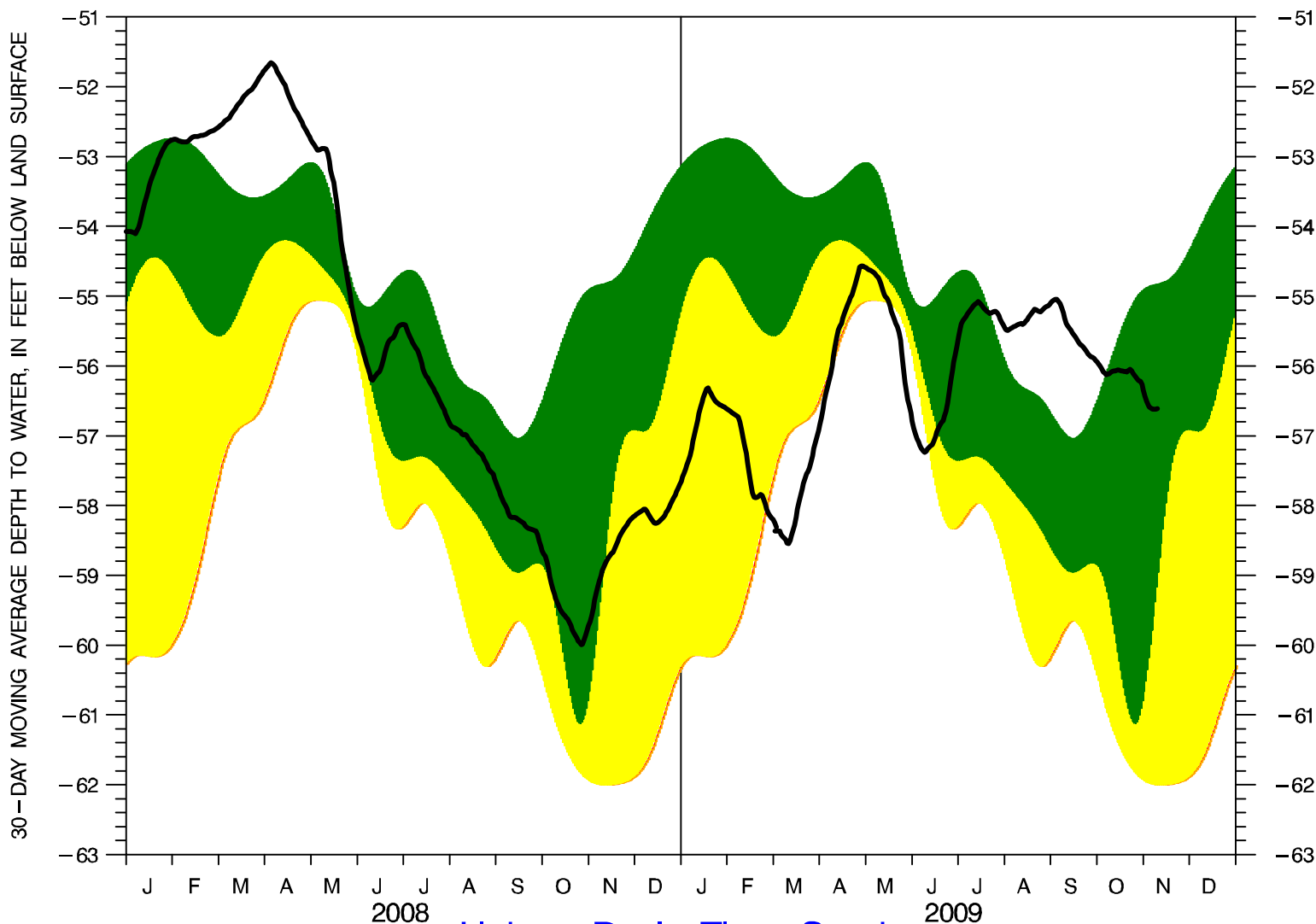


LACKAWANNA COUNTY OBS WELL LK-508

US GEOLOGICAL SURVEY PROVISIONAL DATA - SUBJECT TO CHANGE

30-DAY MOVING AVERAGE DAILY DEPTH TO WATER

BEGIN YEAR=2001 NUMBER OF YEARS=8.1 DATE OF PLOT=11/07/09



ALL DATA SHOWN ARE BASED ON 30-DAY MOVING AVERAGES; PERCENTILE BANDS HAVE BEEN SMOOTHED.

SOLID LINE = 30-DAY MOVING AVERAGE OF CURRENT DAILY DEPTH TO WATER

GREEN (TOP) BAND = 25- TO 75-PERCENTILE DEPTHS (NORMAL CONDITIONS)

YELLOW BAND = 10- TO 25-PERCENTILE DEPTHS (DROUGHT WATCH CONDITIONS)

ORANGE BAND = 5- TO 10-PERCENTILE DEPTHS (DROUGHT WARNING CONDITIONS)

RED (BOTTOM) BAND = 0- TO 5-PERCENTILE DEPTHS (DROUGHT EMERGENCY CONDITIONS)