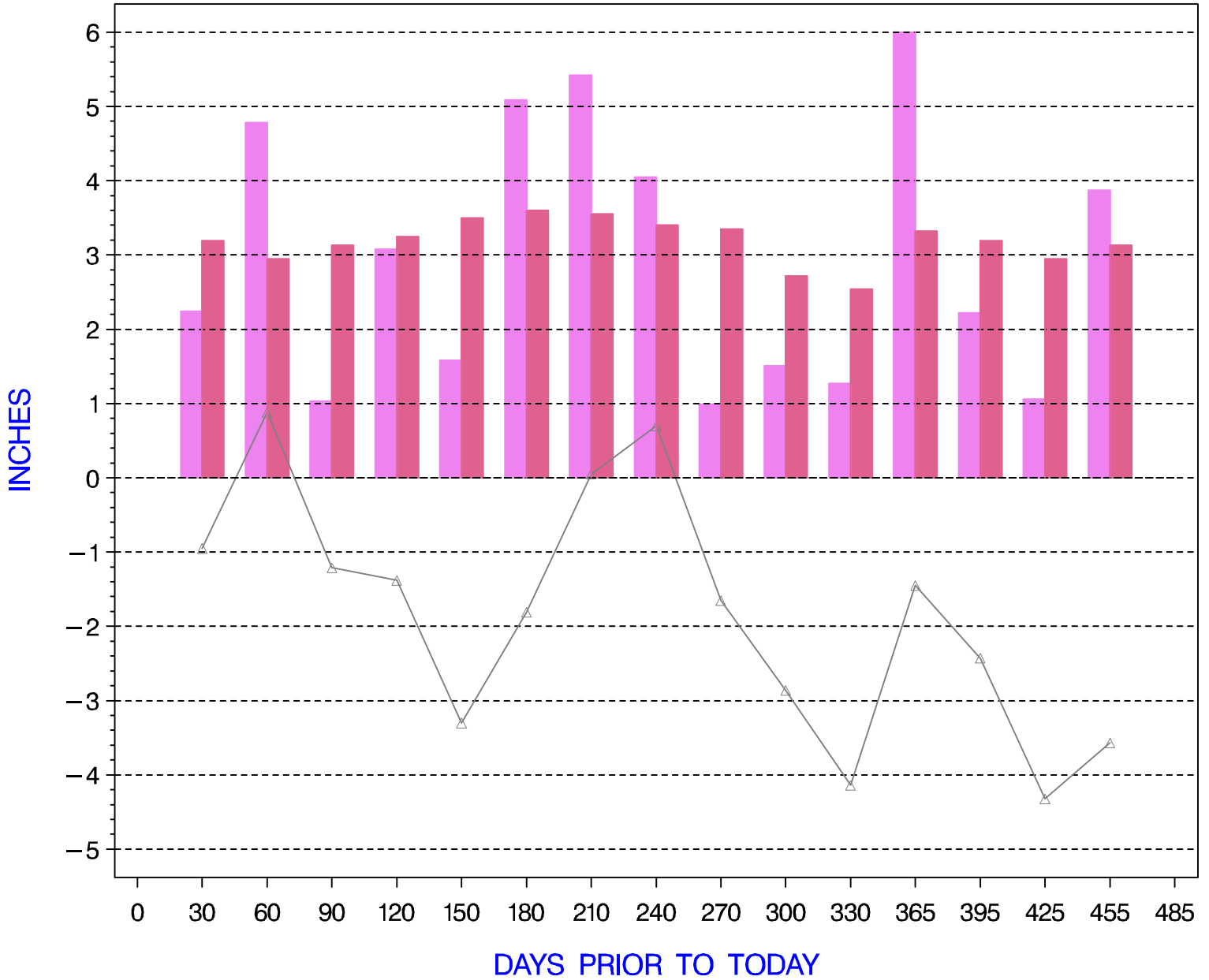


FULTON COUNTY 30 DAY INTERVAL PRECIPITATION AND ACCUMULATED DEPARTURES
 PRECIPITATION DATA SUPPLIED BY THE NATIONAL WEATHER SERVICE
 DATE OF PLOT = 11/23/09



Note: Departures from normal precipitation, as shown by the line plot, are accumulated in reverse from the most recent date, consistent with Pennsylvania's drought monitoring criteria for precipitation.

left bar is actual precipitation
 right bar is normal precipitation
 gray line is cumulative departure from normal