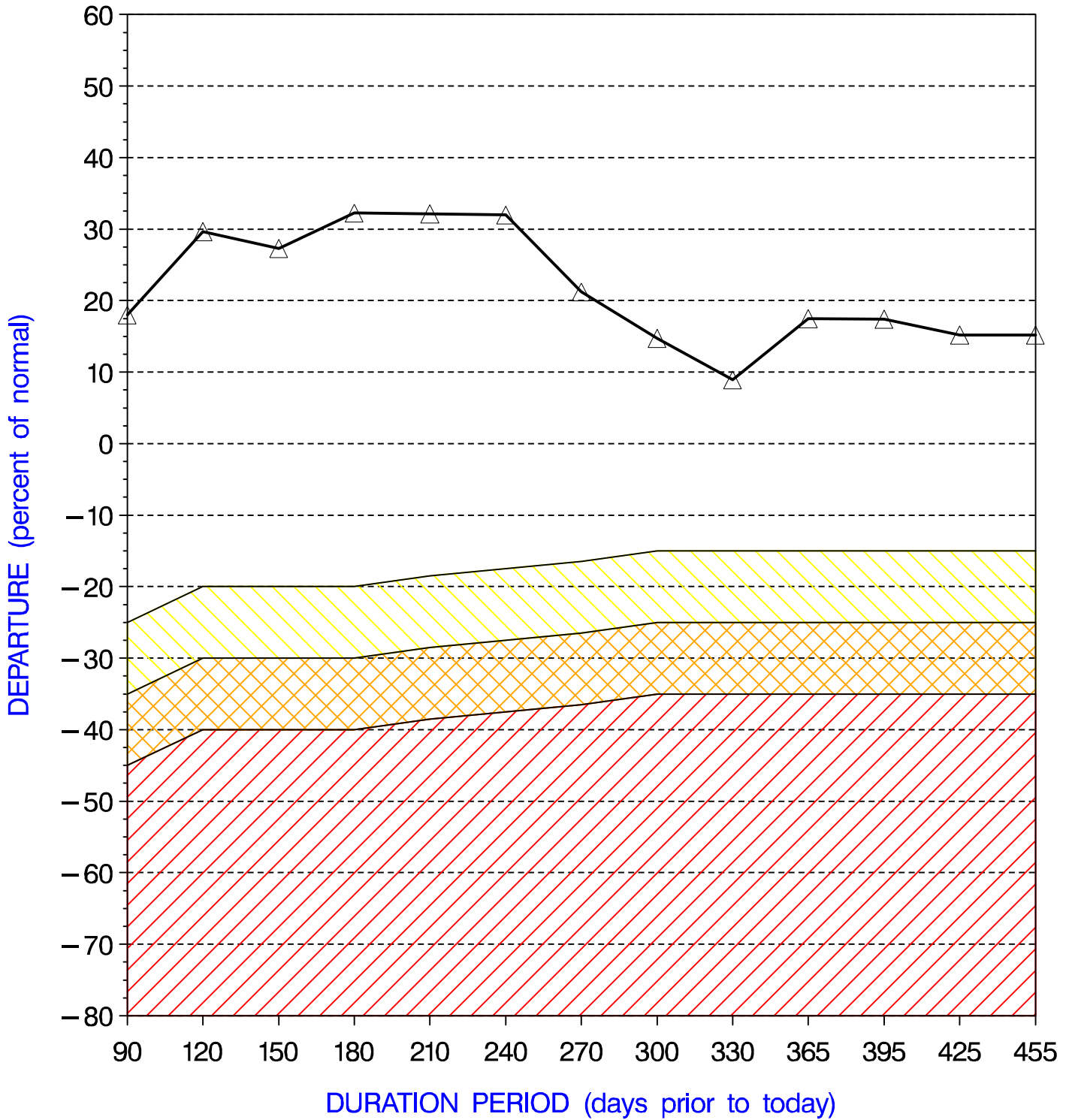


DAUPHIN COUNTY PRECIPITATION PERCENT DEPARTURES

PRECIPITATION DATA SUPPLIED BY THE NATIONAL WEATHER SERVICE

DATE OF PLOT = 11/23/09



Note: Grey line is Percent Departure from normal precipitation at the durations shown

\\ yellow area represents drought watch indicator standards
XXX orange area represents drought warning indicator standards
/// red area represents drought emergency indicator standards