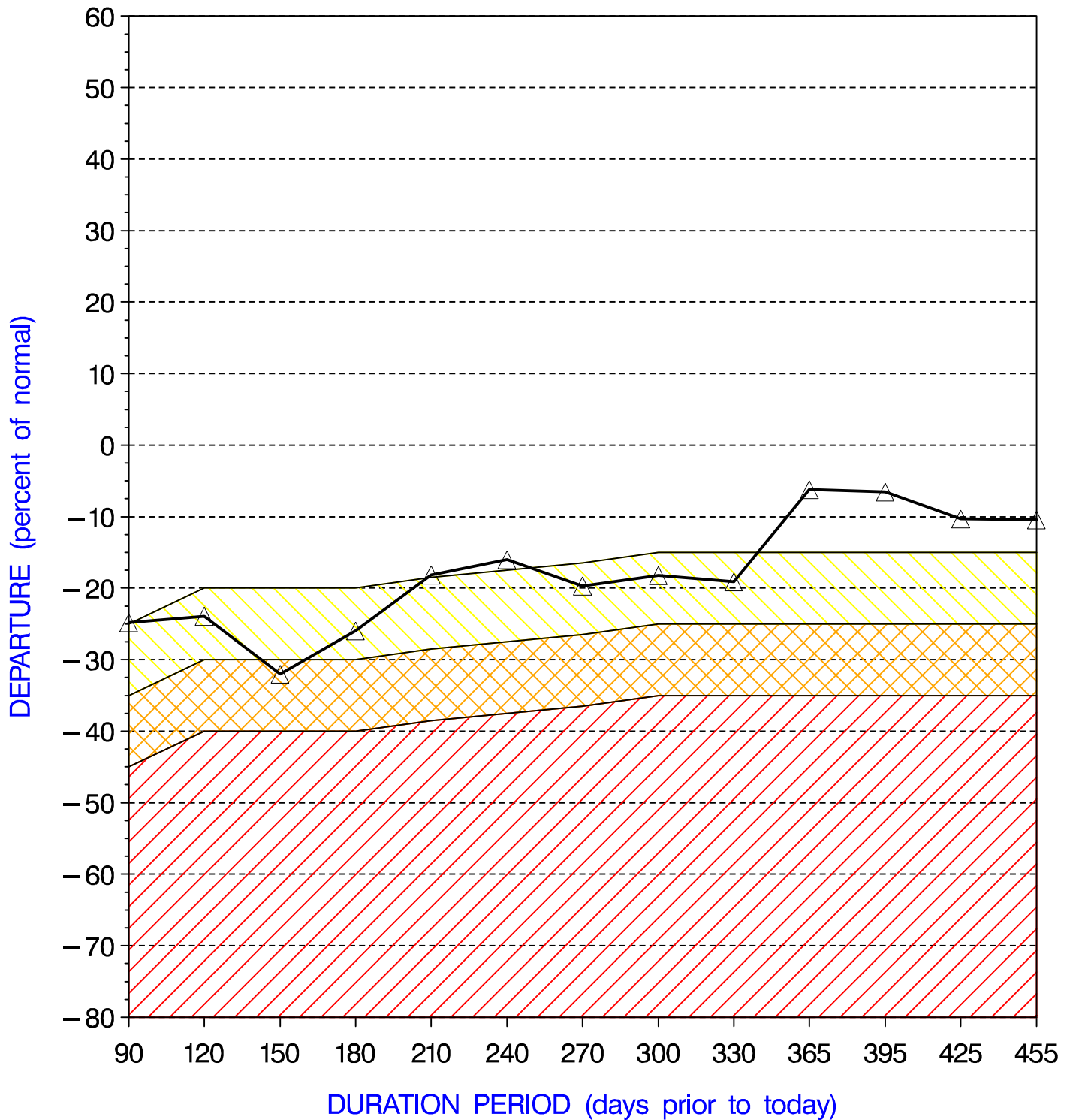


GREENE COUNTY PRECIPITATION PERCENT DEPARTURES

PRECIPITATION DATA SUPPLIED BY THE NATIONAL WEATHER SERVICE

DATE OF PLOT = 11/23/09



Note: Grey line is Percent Departure from normal precipitation at the durations shown

yellow area represents drought watch indicator standards
orange area represents drought warning indicator standards
red area represents drought emergency indicator standards