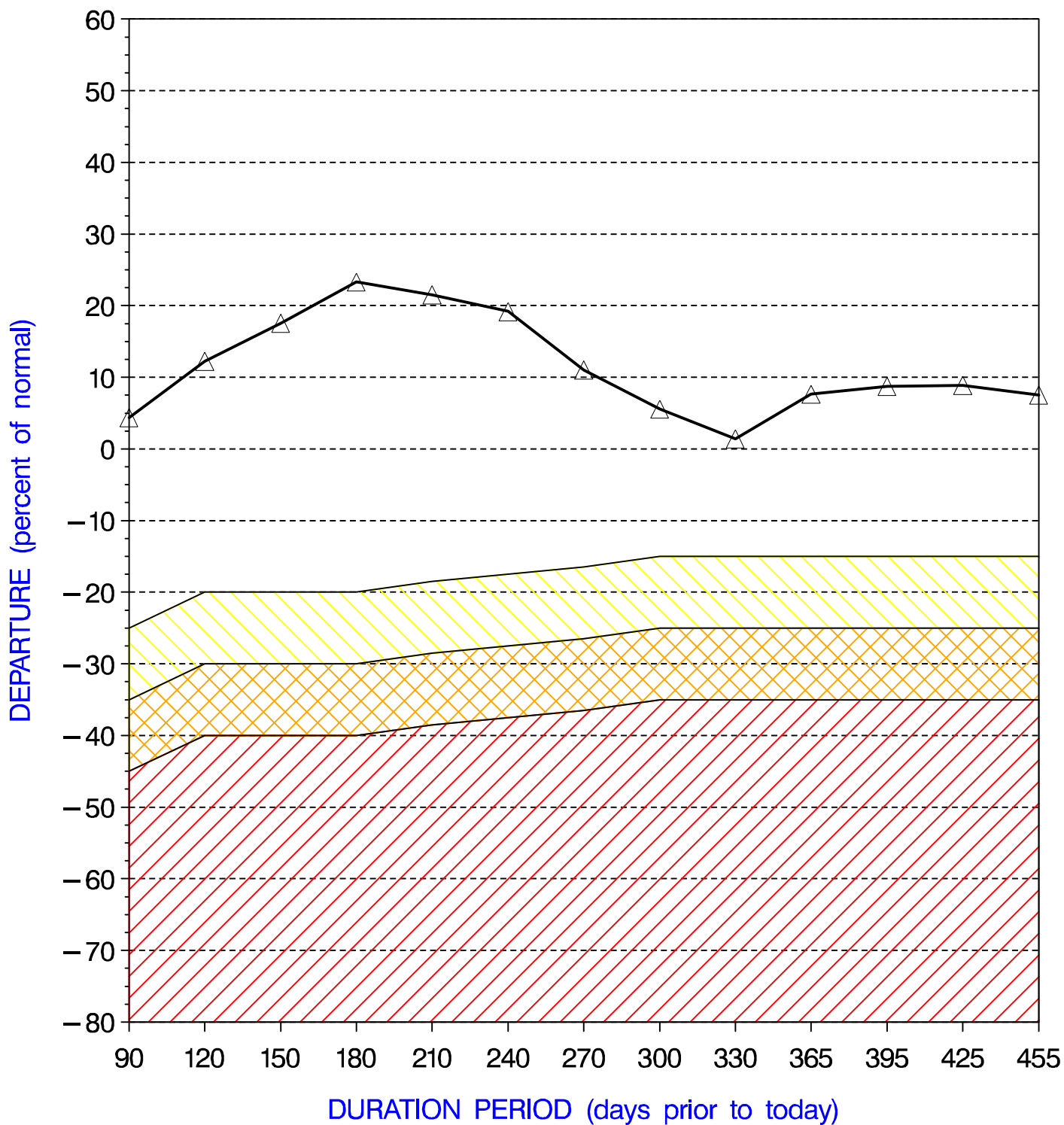


NORTHUMBERLAND COUNTY PRECIPITATION PERCENT DEPARTURES
 PRECIPITATION DATA SUPPLIED BY THE NATIONAL WEATHER SERVICE
 DATE OF PLOT = 11/23/09



Note: Grey line is Percent Departure from normal precipitation at the durations shown

yellow  area represents drought watch indicator standards
orange  area represents drought warning indicator standards
red  area represents drought emergency indicator standards