



2005 Water Year
WEST BRANCH SUSQUEHANNA RIVER BASIN
01548500 Pine Creek at Cedar Run, PA

Latitude: 41° 31' 18"

Longitude: 077° 26' 52"

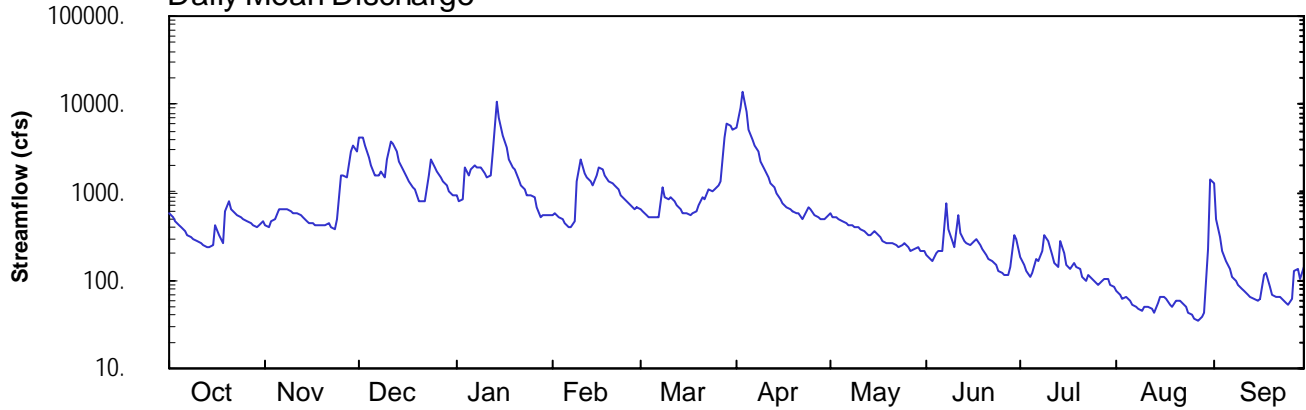
Hydrologic Unit Code: 02050205

Lycoming County

Datum: 780.36 feet

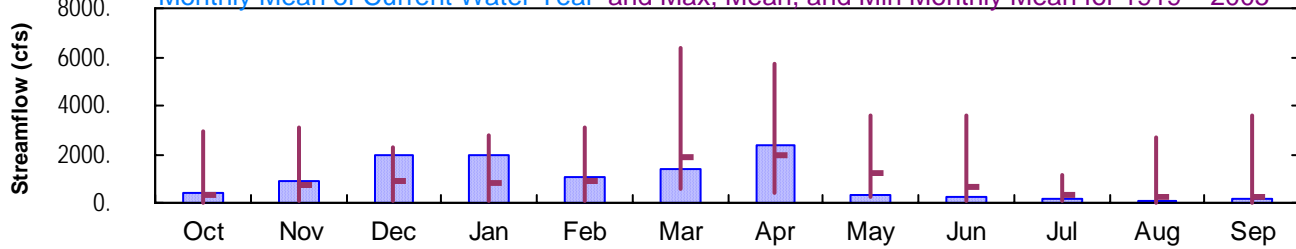
Drainage Area: 604. mi²

Daily Mean Discharge

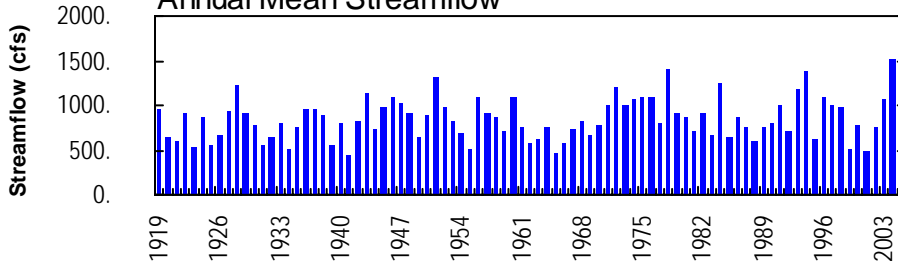


Monthly Statistics

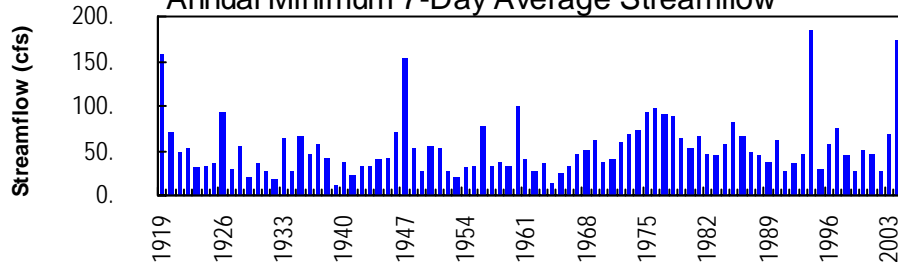
Monthly Mean of Current Water Year and Max, Mean, and Min Monthly Mean for 1919 – 2005



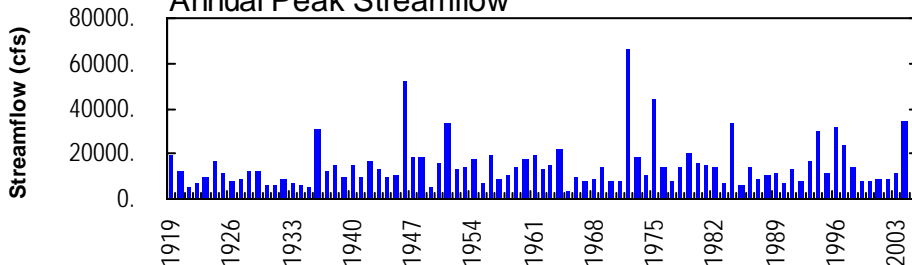
Annual Mean Streamflow



Annual Minimum 7-Day Average Streamflow



Annual Peak Streamflow



WEST BRANCH SUSQUEHANNA RIVER BASIN

01548500 PINE CREEK AT CEDAR RUN, PA

LOCATION.--Lat 41°31'18", long 77°26'52", Lycoming County, Hydrologic Unit 02050205, on left bank at upstream side of highway bridge on Township Route 762 at village of Cedar Run, 2,000 ft downstream from Cedar Run, and 1.2 mi upstream from Gamble Run.

DRAINAGE AREA.--604 mi².

PERIOD OF RECORD.--July 1918 to current year. Prior to October 1918 monthly discharge only, published in WSP 1302.

GAGE.--Water-stage recorder. Datum of gage is 780.36 ft above National Geodetic Vertical Datum of 1929. Prior to Feb. 13, 1930, nonrecording gage at same site and datum.

REMARKS.--Records good except those for estimated daily discharges, which are poor. Several measurements of water temperature were made during the year. Satellite and landline telemetry at station.

PEAK DISCHARGES FOR CURRENT YEAR.--Peak discharges greater than a base discharge of 5,900 ft³/s and maximum (*):

Date	Time	Discharge ft ³ /s	Gage Height (ft)	Date	Time	Discharge ft ³ /s	Gage Height (ft)
Jan. 14	0730	12,500	7.67	Apr. 3	0045	*16,200	*8.58
Mar. 29	1930	6,410	5.70				

DISCHARGE, CUBIC FEET PER SECOND, WATER YEAR OCTOBER 2004 TO SEPTEMBER 2005
DAILY MEAN VALUES

DAY	OCT	NOV	DEC	JAN	FEB	MAR	APR	MAY	JUN	JUL	AUG	SEP
1	572	435	4080	913	e560	653	5550	579	192	184	78	1280
2	511	401	4100	803	e570	615	8910	525	172	146	70	491
3	470	470	3340	812	e530	546	14200	514	169	126	62	304
4	428	495	2510	1870	e490	e510	8050	494	209	112	64	220
5	396	641	1970	1590	e450	e530	5240	470	210	122	58	169
6	360	636	1600	1780	e410	528	3980	452	218	179	53	136
7	331	639	1540	2030	e410	521	3390	e430	747	165	49	112
8	310	645	1760	1930	e470	1160	2890	e420	380	218	47	98
9	295	617	1440	1900	e1300	872	2270	407	279	329	46	88
10	280	585	2330	1670	2390	819	1840	394	240	275	50	81
11	265	569	3740	1510	1630	860	1520	376	537	199	51	74
12	252	564	3500	1540	1500	772	1280	353	345	159	48	69
13	241	530	2950	2920	1330	716	1120	333	284	142	42	65
14	239	481	2280	10500	1190	627	975	323	266	275	55	62
15	256	454	1770	6920	1550	583	844	354	254	e200	66	59
16	419	444	1480	4500	1930	574	754	341	274	150	64	61
17	324	429	1310	3270	1860	554	689	305	300	135	63	117
18	268	422	1140	2320	1560	591	642	285	251	154	52	122
19	604	414	1060	1960	1330	620	604	270	227	143	51	83
20	773	421	e810	1780	1240	726	569	264	199	136	57	70
21	628	447	e800	1380	1180	898	571	261	178	110	60	66
22	577	405	e800	e1200	1060	852	504	251	162	100	56	67
23	548	386	1530	e1100	943	1100	536	242	149	117	49	61
24	514	496	2320	e930	827	1050	675	246	131	102	43	55
25	505	1520	1930	e930	782	1080	628	262	122	97	40	53
26	476	1590	1750	e860	727	1170	559	240	114	90	37	62
27	447	1500	1480	e670	639	1300	514	219	117	98	35	128
28	423	2950	e1300	e520	660	4280	496	226	143	106	38	136
29	410	3380	e1200	e550	---	6080	484	233	325	104	42	103
30	424	2840	1030	e550	---	5700	511	216	288	91	222	144
31	480	---	937	e560	---	5180	---	216	---	84	1420	---
TOTAL	13026	25806	59787	61768	29518	42067	70795	10501	7482	4648	3168	4636
MEAN	420	860	1929	1993	1054	1357	2360	339	249	150	102	155
MAX	773	3380	4100	10500	2390	6080	14200	579	747	329	1420	1280
MIN	239	386	800	520	410	510	484	216	114	84	35	53
CFSM	0.70	1.42	3.19	3.30	1.75	2.25	3.91	0.56	0.41	0.25	0.17	0.26
IN.	0.80	1.59	3.68	3.80	1.82	2.59	4.36	0.65	0.46	0.29	0.20	0.29

STATISTICS OF MONTHLY MEAN DATA FOR WATER YEARS 1919 - 2005, BY WATER YEAR (WY)

MEAN	366	756	859	841	899	1849	1970	1236	626	293	241	255
MAX	2910	3077	2260	2741	3090	6362	5678	3580	3601	1171	2712	3578
(WY)	1991	1951	1928	1937	1981	1936	1993	1919	1972	2004	1994	2004
MIN	28.9	41.3	65.4	47.6	119	590	374	238	90.4	50.2	32.6	19.3
(WY)	1965	1931	1961	1931	1920	1981	1946	1941	1991	1966	1939	1964

e Estimated.

WEST BRANCH SUSQUEHANNA RIVER BASIN

01548500 PINE CREEK AT CEDAR RUN, PA--Continued

SUMMARY STATISTICS	FOR 2004 CALENDAR YEAR		FOR 2005 WATER YEAR		WATER YEARS 1919 - 2005	
ANNUAL TOTAL	505515		333202			
ANNUAL MEAN	1381		913		848	
HIGHEST ANNUAL MEAN					1516	2004
LOWEST ANNUAL MEAN					444	1941
HIGHEST DAILY MEAN	27500	Sep 18	14200	Apr 3	42600	Jun 23 1972
LOWEST DAILY MEAN	141	Jul 11	35	Aug 27	8.0	Sep 2 1939
ANNUAL SEVEN-DAY MINIMUM	174	Jul 1	41	Aug 23	11	Aug 28 1939
MAXIMUM PEAK FLOW			a16200	Apr 3	a66000	Jun 23 1972
MAXIMUM PEAK STAGE			8.58	Apr 3	b16.00	Jun 23 1972
INSTANTANEOUS LOW FLOW			34	Aug 27	8.0	Sep 1 1939
ANNUAL RUNOFF (CFSM)	2.29		1.51		1.40	
ANNUAL RUNOFF (INCHES)	31.13		20.52		19.08	
10 PERCENT EXCEEDS	2950		1940		2040	
50 PERCENT EXCEEDS	770		481		400	
90 PERCENT EXCEEDS	314		67		65	

a From rating curve extended above 16,000 ft³/s on basis of slope-area measurement of peak flow.

b From floodmark.

